

DAILY REPORT #22 – DORIS NORTH INFRASTRUCTURE/ NORTH DAM

Prepared by:	John Kurylo/ Jeff Orr / Megan Miller	Date:	2012.01.27
Reviewed by:		Project #:	1CH008.058.0320
Role	Company	Personnel – Position	On Site
Client	Hope Bay Mining Limited (HBML)	Angela Holzapfel – ESR Compliance Manager David Vokey – ESR Coordinator Don Ethelston – HSLP Advisor Dean Wold - Safety Jill Turk – ESR Coordinator Katsky Venter – ESR Manger Michelle Tanquay – ESR Site Manager Stirling Kelly – HSLP Advisor	No Yes Yes No No Yes No No
	JDS	Lloyd Jackson – Mechanical Superintendent Sven Archimowtiz – Electrical Superintendent Doug Fielding – Construction Manager Ishan Fechter – Construction Coordinator Jerry Graham – Construction Manager Kevin Whieldon – Project Coordinator Mark Valeriote – Construction Manager	Yes Yes Yes No No Yes Yes
Engineering Design Consultants	SRK Consulting (Canada) Inc.	John Kurylo – Site Engineer Megan Miller – Site Engineer Lawrence Borowski – Site Engineer Murry McGregor – Site Engineer Iozsef Miskolczi – Site Engineer	Yes Yes No No No
	EBA Engineering Consultants Ltd.	Jeff Orr – Project Manager Jennifer Stirling – Geologist Thomas Bradshaw – Junior Engineer Ernest Palczewki – Geologist	Yes Yes No No
Earthworks Contractor	Nuna Logistics	Ben Voistermans - Foreman Bradford Watkin – QC Manager Doug Haverland – Area Superintendent Gary Sodhi – Field Engineer Georges Cornelissen – Survey Manager Jeff Roberts - Surveyor Jim Cardinal – Foreman Kevin Oakes – Project Engineer Kevin Kozdrowski – Foreman Kyle Kuntz – Project Engineer Margaret Caley – Surveyor Matt McKay – Civil Supervisor Mike MacMaster – Surveyor Mike Price – Field Engineer Nick Stoneberger – Superintendent Rick Peters – Foreman Ron MacMaster – Surveyor Simon Chipper – Civil Supervisor	Yes No Yes Yes Yes No Out No No Yes Yes Yes Yes No No No No No Yes
External Distribution List:	SRK: Maritz Rykaart, Lowell Wade, Seema Kang, Silkie Wong EBA: Robert Zschuppe Nuna: Chris Petrovic JDS: Bob Prince-Wright HBML: Dave Power, Gerry Benson		
This Construction Daily Report is produced as an internal communication document between SRK site and head office staff. Any distribution of this report outside of SRK is done as a courtesy, and the information contained in this report are for information only to those external parties.			

WEATHER (ROBERTS BAY)

<http://www.wunderground.com/weatherstation/WXDailyHistory.asp?ID=INUNAVUT3>

Temperature/Wind Chill (°C)	6AM: -23.1/-50	12 PM:-26.4/-48	6 PM: -30.4/-61	12 AM:-32.9/-60
Precipitation (mm)	Rain: None		Snow: None	
Conditions	Day Shift: Raging wind.		Night Shift: Gusting wind dying down at ~2 am.	
Daily norms (°C)	24 hour high: -17.8		24 hour low: -32.9	

HEALTH, SAFETY AND ENVIRONMENT

- Megan Miller attended the nightly Nuna construction meeting.
- A red fox was sighted north of the DN camp heading W towards Quarry 2.

COMMENTS, CORRESPONDENCE AND ACTIVITIES**DAILY MEETING WITH NUNA AND HBML TEAM:**

- The daily meeting was attended by ADCO, Nuna [Doug Haverland], Newmont Safety [Don Ethelston], ESR [Katsky Venter], JDS [Doug Fielding, Mark Valeriote, Kevin Whieldon, Sven Archimowtiz], SRK [John Kurylo].

Topic	Status
Health and Safety and Environment	<ul style="list-style-type: none"> • Safety had no issues to report. • Watch the weather. Weather conditions are starting to get worst and winds are picking up. • A small spill of antifreeze was noted out front of the camp. This is believed to be from equipment or a vehicle running in this area (to be further looked into). • JDS to update ESR on recent activities/ progress after the daily meeting. • Required breaks between shifts were discussed. A minimum of 8 hours is required between shifts.
North Dam	<ul style="list-style-type: none"> • SRK provided a summary/ overview of construction activities at the North Dam for 2012/ 01/ 26. <ul style="list-style-type: none"> ◦ There is freezeback everywhere in the key trench. ◦ Cleaning and Transition Zone material placement resulted on Jan 26th. • Nuna is short on personnel/ operators. • Matt McKay has switched over to nightshift until Kevin Kozdrowski is back on site for Nuna. • SRK re-requested that the labs water be refilled. • The wash car at the FCP Pad has been locked out and is not expected to be reopened this season, due to ongoing / reoccurring issues. • An exhaust fan, to assist with reducing dust in the FCP, is planned to be installed in the coming days, • SRK re-requested that the thermistor cable that has been severed (ND-HTS-060-28.8) be repaired. Nuna electricians to look at the thermistor cable today.
Water Management Structures	<ul style="list-style-type: none"> • There are no plans to work on the Doris North sumps today. • A 330 excavator, equipped with a ripper tooth/ shank, will be used to break up the drilled Sump 2 location and the 308 excavator will be used to excavate material within the Sump 2 footprint.
General	<ul style="list-style-type: none"> • ADCO had no requests. They will be working at the DN Tank Farm. • The Wetarc excavator is planned to have the drill swapped off of it for a bucket. Westarc can then complete cleaning if/ as required when drilling at the DN Diversion Berm footprint.

SURVEY:

Required	<ul style="list-style-type: none"> • Pick-up of 5/8" material removal from 2012/01/25
Data Received	<ul style="list-style-type: none"> • Survey of Transition material placed 2012/01/26 • Approved area of core placement (based on 2012/01/26 survey) • Placed FCM 2012/01/25
Outstanding	<ul style="list-style-type: none"> •
Upcoming	<ul style="list-style-type: none"> • Survey of frozen core surface after cleaning/ scraping activities at N. Dam (on going). • Survey of FCM after placement (on going).

NORTH DAM/FROZEN CORE PLANT PAD:**Frozen Core Plant***Dayshift*

- The FCP started up at~ 9:00am today.
 - FCM temperatures leaving the FCP chute ranged from ~ 34 to 42°C today.
 - Around 16:30 the loader when down and the plant was run out. The last load was sent down to the dam around 17:15.
 - It was times that it was taking around 16 to 17minutes to fully fill a truck at the FCP.
 - ~3 truckloads per hour were being hauled from the FCP.
- The 325 excavator, was used at the FCM stockpile to sort and break down unsaturated frozen lumps of FCM.
 - The excavator is doing a much better job than the dozer at breaking up the lumps in the FCM. Material being fed into the FCP today had a very low frequency of larger lumps and was assisting with producing a better FCM product.
- Due to the higher temperatures of the FCM and due to the fine, more broken up feed, the material produce today had only minimal minor unsaturated frozen lump occurrences and only trace to no notable lumps by the time loads were dumped for placement.

Nightshift

- A replacement loader was found for use at the plant during the night shift.
- The FCP was attempted to be started at ~8 pm however start-up was delayed due to something being frozen.
- The plant stopped a few times during placement due to problems with a belt.
- Additional loader issues were briefly experienced approximately halfway through shift.
- At ~5 am there was insufficient loose material available in the stockpile to continue placement.

Dam Shell

- No significant activity.

Key Trench*Dayshift*

- Cleaning resulted on dayshift around 0+40 to 1+85 on dayshift (most of the cleaning effort was focused around 0+70 to 1+160).
 - Due to blowing snow conditions, additional cleaning was periodically required along the downstream edge of the keytrench.
- FCM placement resulted today from ~ 0+75 to 1+20.
 - 22 (730 haul truck) loads of material were placed at the dam on dayshift today.
 - This is approximately the 4th lift that has been placed around this area since 2012 construction activities recommenced.
- It was decided that the area where the downstream slope will be overbuilt (from ~ 0+95 to 1+40 see

daily report #22 for details) would be allowed (one time allowance) to be placed in a slightly thicker lift (less than 0.5m, typically closer to 0.4m), as this area is outside of the IFC design limits/ lines. Additional vibratory compaction effort was completed on these sections, at the request of SRK/ EBA.

- A progress figure showing dayshift FCM placement is included as Figure 1.
- The nun electrician visited the north dam site and inspected severed thermistor cable ND-HTS-060-28.8. The area will be covered and heated in the coming days so that the electricians can fix the cable. The labours have dug out around the location of the severed cable.
- A figure (prepared by Nuna Survey) showing the extent 5/8" material clearing, surveyed in the field with SRK and Nuna survey on 2012/01/26 (see daily #21) is provided as Figure 3.

Nightshift

- At the beginning of shift the areas where snow had accumulated were swept with the broom on the skid steer from 1+20 north east.
- Labourers used brooms and shovels to clean snow from the trough along the downstream slope. Cleaning was done throughout the night prior to material placement as the trough kept filling with snow.
- FCM was placed from approximately sta.1+10 to 1+57.
 - The first few loads were on the dry side and the moisture at the plant was increased. With additional packing the dry loads met the requirements for compaction and saturation.
 - Core placement went well.
 - Placement ended when insufficient material was available.
 - Single bead thermistor #58 was installed in this lift.
- Multi-bead thermistor readings were taken for all thermistors located within the key trench (horizontal and vertical) with the exception of ND-HTS-060-28.8 which is severed all thermistors were found to be in working order.
- A progress figure showing nightshift construction progress at the North Dam is included as Figure 2.

Field Geotechnical Testing, Laboratory and Sampling

- Single bead #57 and #58 were installed and read.

SINGLE BEAD THERMISTOR STATUS

Installed Today			Active			Destroyed / Abandoned		
ID	Station	US/DS/Center	ID	Station	US/DS/Center	ID	Station	US/DS/Center
SB57	1+10	Center				SB40	0+60	US
SB58	1+40	Center						

- A summary of the material testing progress for 2012/01/27 is presented in the tables below.

PARTICLE SIZE DISTRIBUTION SUMMARY

Collected	Processed	Completed
HB12-ND-CORE-PSD10-QA-20120127		HB12-ND-CORE-PSD9-QA-20120124

MOISTURE CONTENT SUMMARY

Collected	Processed	Completed
HB12-ND-CORE-MC22-QA-20120127		
HB12-ND-CORE-MC23-QA-20120127		
HB12-ND-CORE-MC24-QA-20120127		
HB12-ND-CORE-MC25-QA-20120127		
HB12-ND-CORE-MC26-QA-20120127		

- Two cores were taken/ drilled on dayshift. Both cores exhibited good drill recovery/ quality.

DRILLED CORE

Collected	Processed	Completed
HB12-ND-CORE-DC8-QA-20120127 HB12-ND-CORE-DC9-QA-20120127		

- Drilled Core 8 (HB12-ND-CORE-DC8-QA-20120127) was taken from 1+60 on the downstream of the key
- Drilled Core 9 (HB12-ND-CORE-DC9-QA-20120127) was taken from 0+55 on the upstream of the key trench.

DRILLED CORE

Number of Tests	Material	Tested By	Shift	Notes
4	Core	JO	Day	All Passed
6	Core	JS	Night	All Passed

- Compaction and saturation results from the nuclear densometer were acceptable.

DORIS NORTH CAMP:

- Westarc continues drilling at the main bedrock outcrop noted towards the east central area of the DN Diversion Berm.
- The 308 excavator has been mobilized to the location of Sump 2.

GENERAL:

- The northern flight to Cambridge Bay was again cancelled due to weather.

PHOTOS:



Photo 1: View of FCM exiting the FCP chute on dayshift. Note the steam coming off the now hotter (30+°C) material.



Photo 2: Drilled Core 8 (HB12-ND-CORE-DC8-QA-20120127) taken from 1+60 DS in the key trench.



Photo 3: Drilled Core 9 (HB12-ND-CORE-DC9-QA-20120127) taken from 0+55 US in the key trench.



Photo 4: ~NNE view of FCM placement progress around station 0+90.



Photo 5: ~ESE view of 308 excavator mobilized to the Sump 2 location.



Photo 6: ~ENE view of FCM placement around station 1+10. The delineators in the forefront of the photo mark the area where FCM placement started on dayshift.



Photo 7: Progress photo of North Dam from photo point 1. ~SW view.



Photo 8: Progress photo of North Dam from photo point 2. ~WNW view.



Photo 9: Progress photo of North Dam from photo point 3. ~ENE view.



Photo 13: View of 345 excavator waiting for final load (around station 1+20) at the end of dayshift.



Photo 11: Labourer cleaning snow from the trough along the downstream side of the key trench.



Photo 12: Skid steer with brush cleaning edge of transition material on the downstream edge of the key trench.

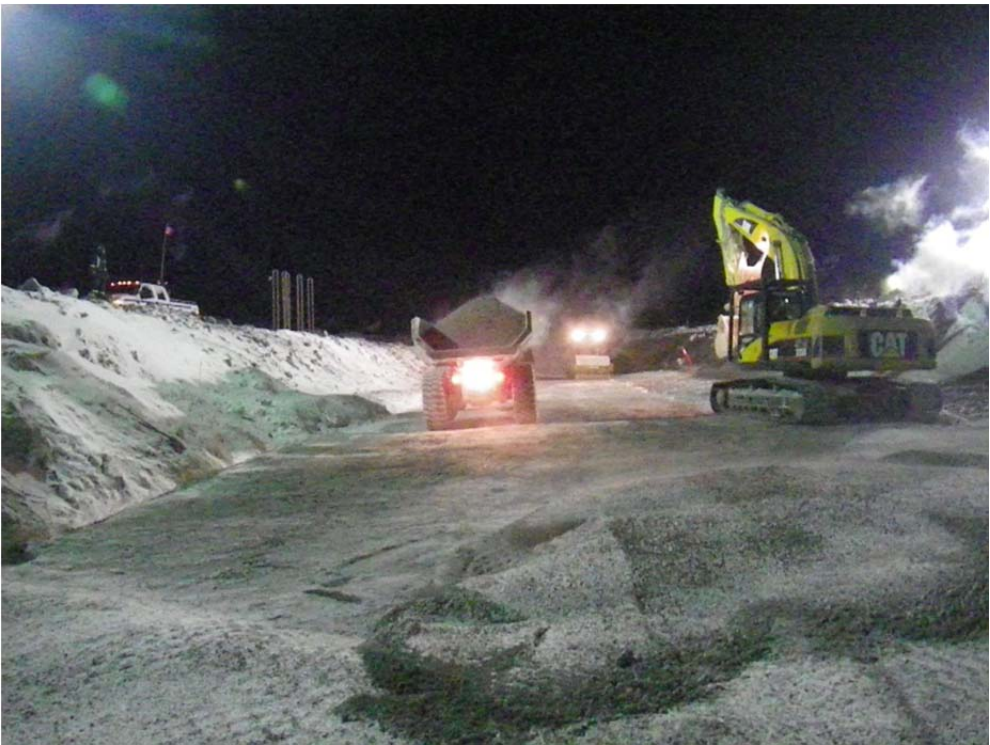


Photo 13: CAT 730 haul truck backing in with load of FCM on nightshift.

FIGURES:

Figure 1 – North Dam Progress – Jan 27th DAYSHIFT

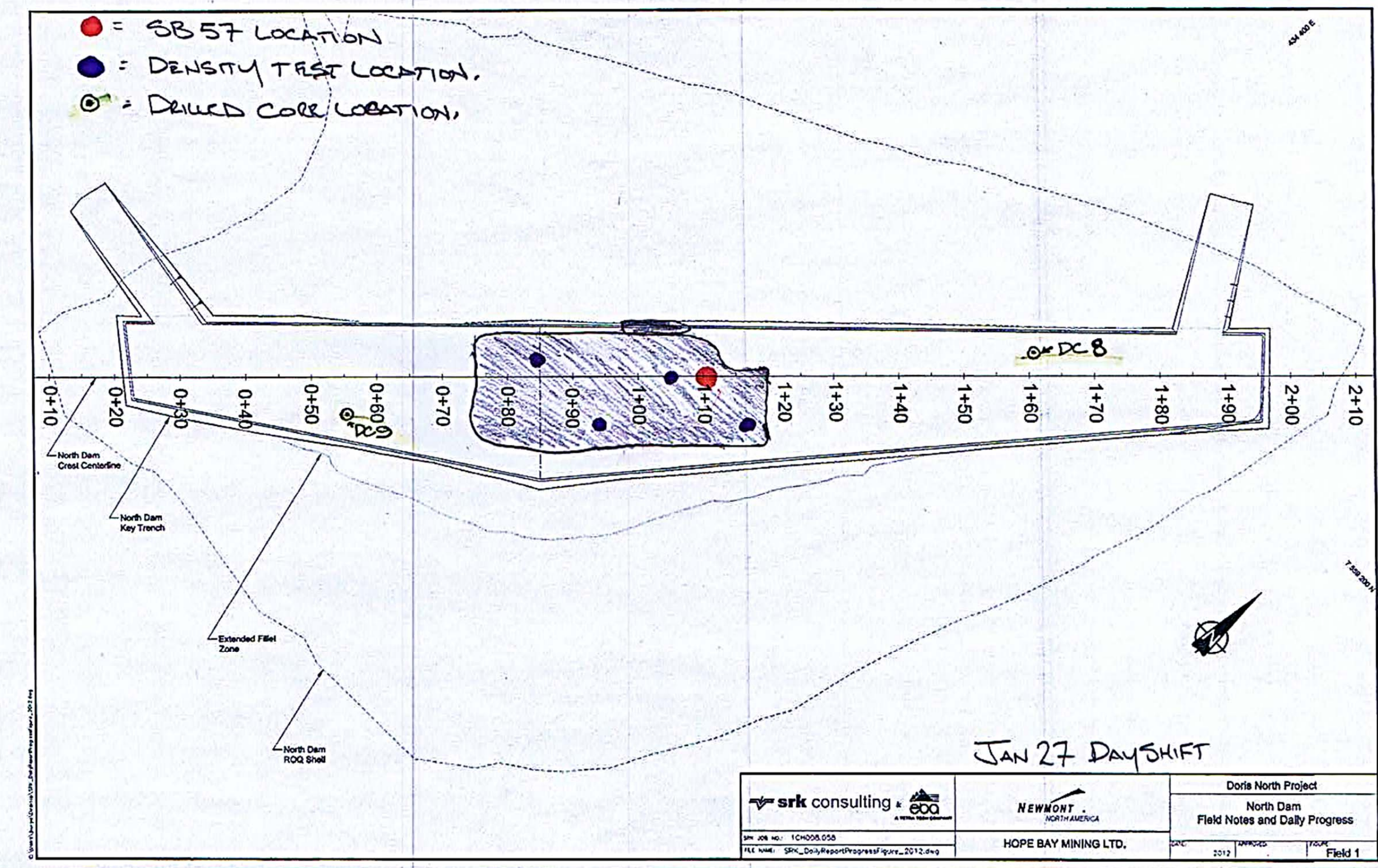


Figure 2 – North Dam Progress – Jan 27th NIGHTSHIFT

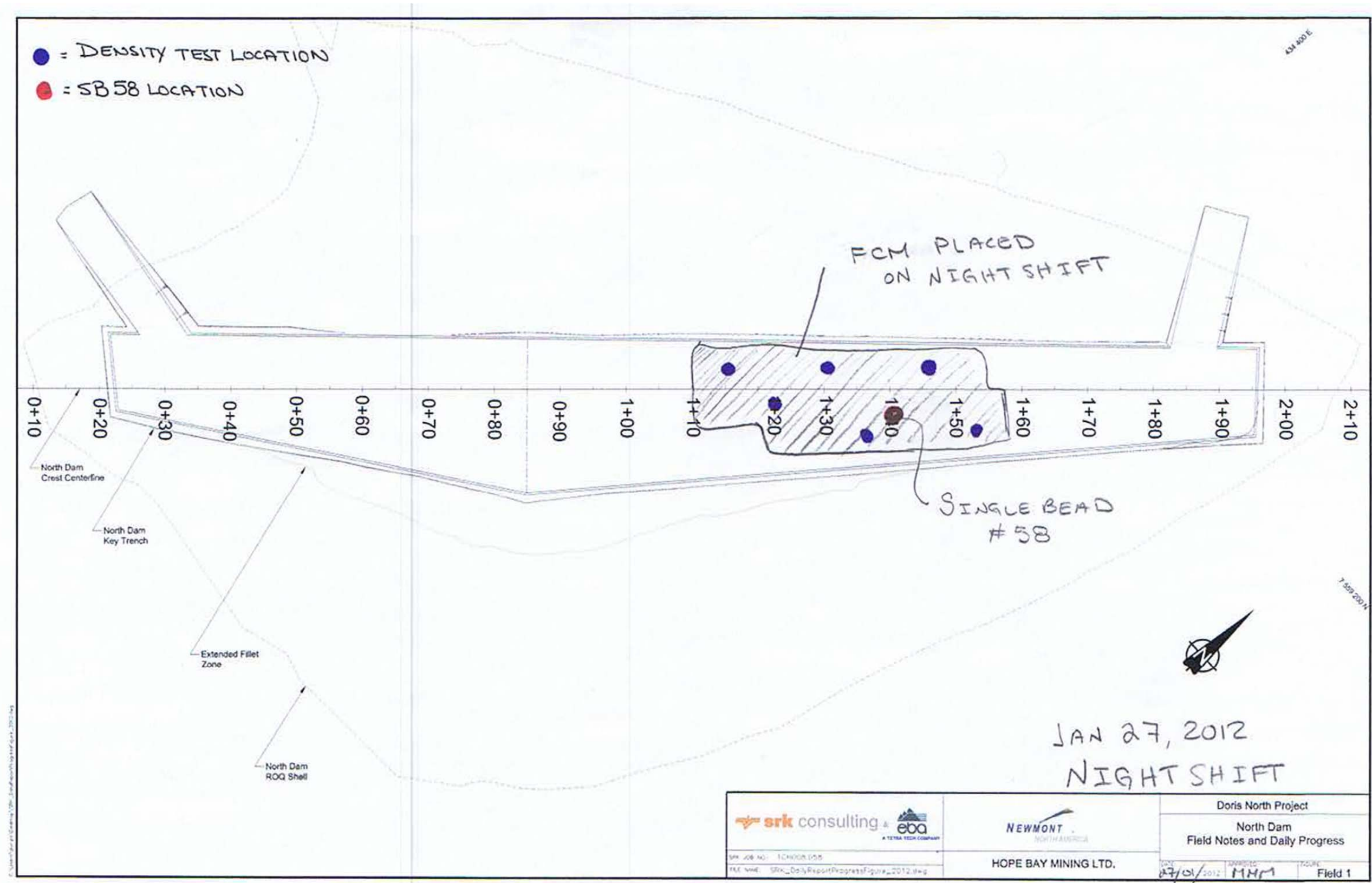


Figure 3 – Figure prepared by Nuna Survey showing the extent 5/8” material clearing, polyline surveyed in the field with SRK and Nuna survey on 2012/01/26 (see daily #21 for additional details).

